



Models: **UMVN1100/50/1**  
**UAVN1100/50/1**  
**UMVN1100/50/3**  
**UAVN1100/50/3**



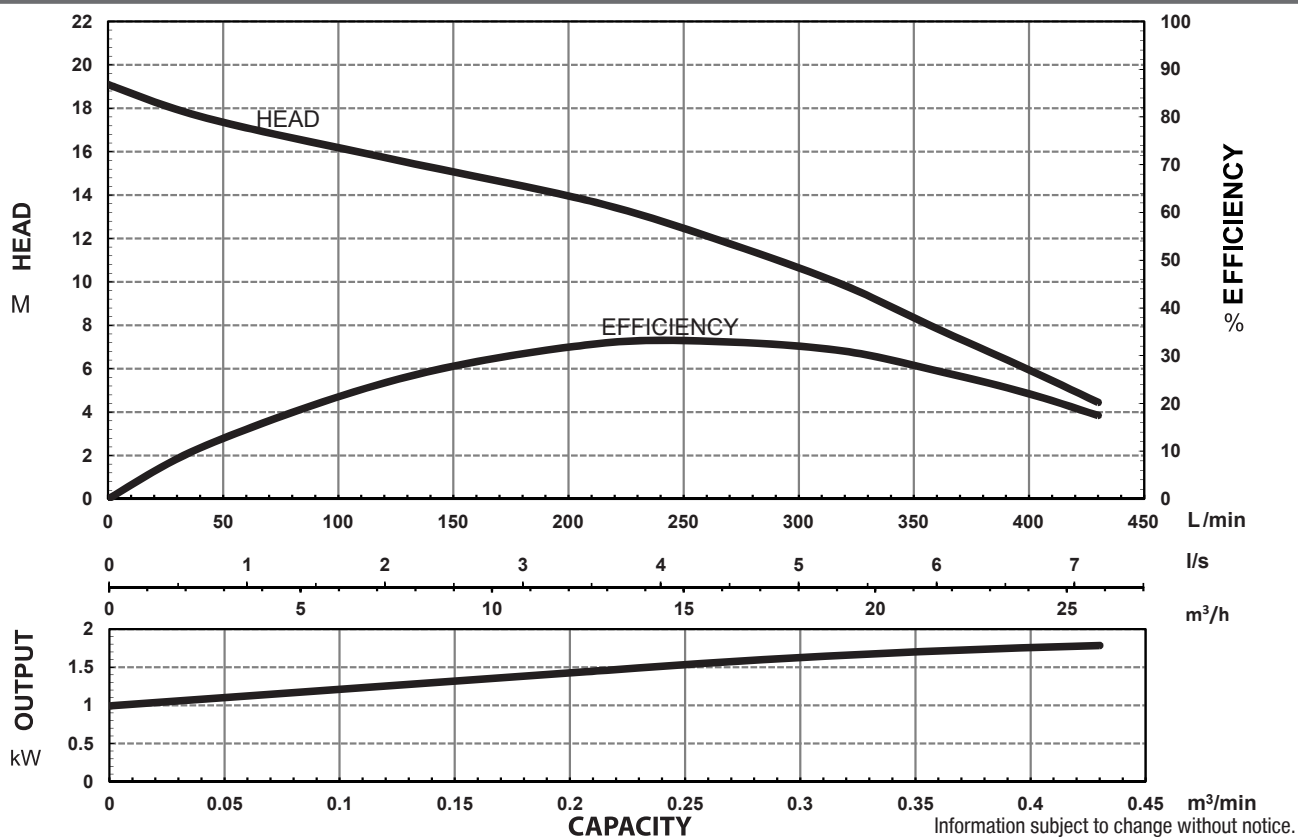
### MODEL NUMBER STRUCTURE

<b>U</b>	Ultraflow
<b>M</b>	'M' indicates Manual, without floats switch 'A' indicates Automatic, without floats switch
<b>V</b>	'V' indicates 'Vortex' series
<b>N</b>	'N' indicates new series
<b>1100</b>	Power consumption in 'Watts'
<b>50</b>	Outlet size
<b>1</b>	'1' indicates 240 volt single phase '3' indicates 415 volt three phase

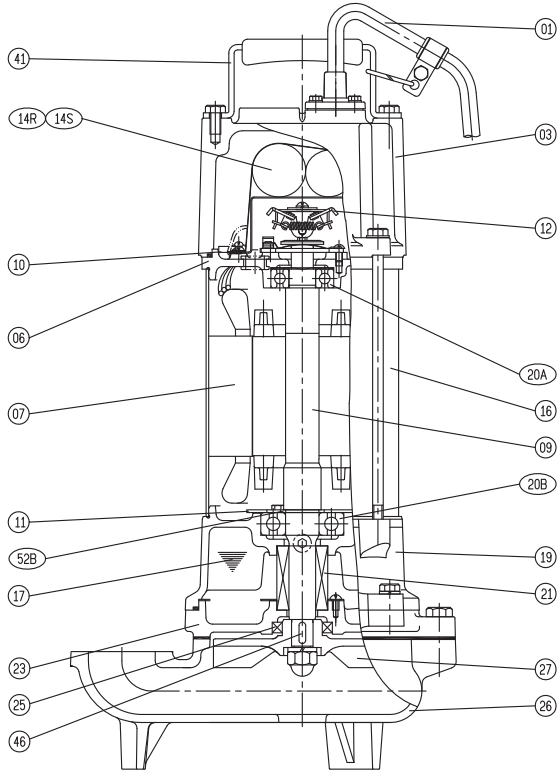
### SPECIFICATIONS

Power	1.1kW / 1.5HP	
Frequency	50Hz	
Discharge	50mm / 2 inch female BSP	
Weight (Excl cable)	30Kg - Single Phase Models 25Kg - Three Phase Models	
Solid Passage	35 mm	
Phase	1 $\emptyset$	3 $\emptyset$
Voltage	240	415
Full Load Amps	9.8	3.4
Maximum Liquid Temperature	0-40° C	
Maximum Submersion Depth	30m (100 feet)	
Motor type	Dry motor	
Motor Speed	2 Pole (2800 rpm)	
Motor Insulation	Class B	
Motor Protection	IP68	
Protector	Auto cut	
Motor Bearings	Ball Type	
Seal Method	Dual Mechanical seal	
	Upper: Carbon/Ceramic Lower: Silicon/Silicon	
Impeller Type	Vortex	
Motor Cover Construction	FC-200 Cast Iron	
Motor Casing Construction	304 Stainless Steel	
Motor Shaft Construction	403 Stainless Steel	
Pump Casing Construction	FC-200 Cast Iron	
Impeller Construction	FC-200 Cast Iron	
Cable Material	H07RN-F	

### PERFORMANCE CURVES



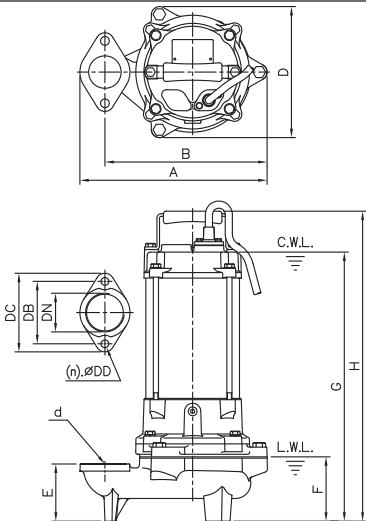
**SECTIONAL DRAWING & MATERIALS LIST**



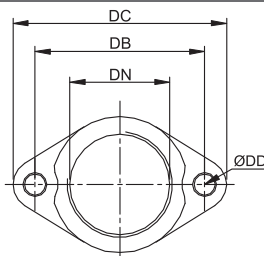
PART NUMBER	DESCRIPTION	MATERIAL
01	Cable	H07RN-F
03	Upper Motor Cap (and bearing housing for UMVN1100/50/3)	Cast Iron FC-200
06	Upper Bearing Housing	Cast Iron FC-200
07	Motor Stator	
09	Shaft With (With Rotor)	(Shaft) Stainless Steel 403
10	Auto Cut Out Overload	
12	Centrifugal Switch (single phase only)	
14R & 14S	Capacitors (for 240 volt models).	
16	Transformer relay for UAVN1100/50/3)	
16	Motor Casing	304 Stainless Steel
17	Lubricant	Turbine Oil
19	Lower Bearing Housing	Cast Iron FC-200
20A & 20B	Upper Bearing & Lower Bearing	
21	Mechanical Seal	Upper: Carbon/Ceramic Lower: Silicon/Silicon
23	Mechanical Seal Housing	Cast Iron FC-200
25	Oil Seal	Nitrile
26	Pump Casing	Cast Iron FC-200
27	Impeller	Cast Iron FC-200
41	Handle	304 Stainless Steel
46	Impeller Key	304 Stainless Steel
47	O'rings	
55	Oil Plug	304 Stainless Steel
FL	Floatswitch	

When ordering spare parts as above, simply add the pump model number to the part number from the list above. For example, a power lead (part '01'). the complete spare part name would be written as '01-UAVN1100/50/1'.

**DIMENSIONAL DRAWING**



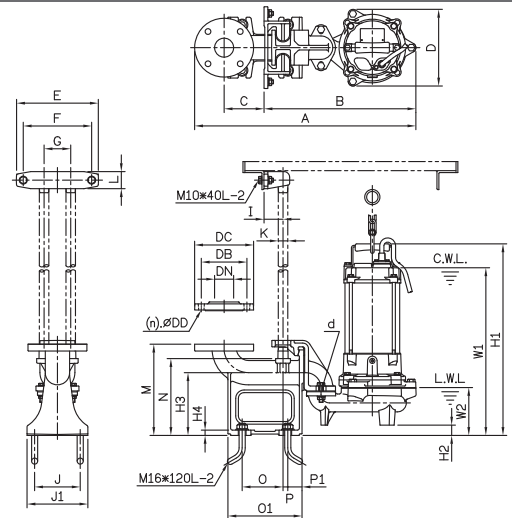
**ELBOW (FLANGE) SET**



**DIMENSIONS - mm**

DN	DB	DC	DD
80	130	155	12

**GUIDE RAIL SYSTEM DIMENSIONS USING GR50 GUIDE RAIL KIT**



**DIMENSIONS - UMVN1100/50/1, UAVN1100/50/1, UAVN1100/50/3**

d	A	B	C	D	E	F	G	I	J	J1	K	M	N	O	O1	P	P1	W1	W2	H1	H2	H3	H4
50	583	400	105	202	215	180	70	50	120	160	25	45	240	108	195	13	38	510	126	573	27	165	14

**DIMENSIONS - UMVN1100/50/3**

d	A	B	C	D	E	F	G	I	J	J1	K	M	N	O	O1	P	P1	W1	W2	H1	H2	H3	H4
50	583	400	105	202	215	180	70	50	120	160	25	45	240	108	195	13	38	441	126	504	27	165	14

Information subject to change without notice.