



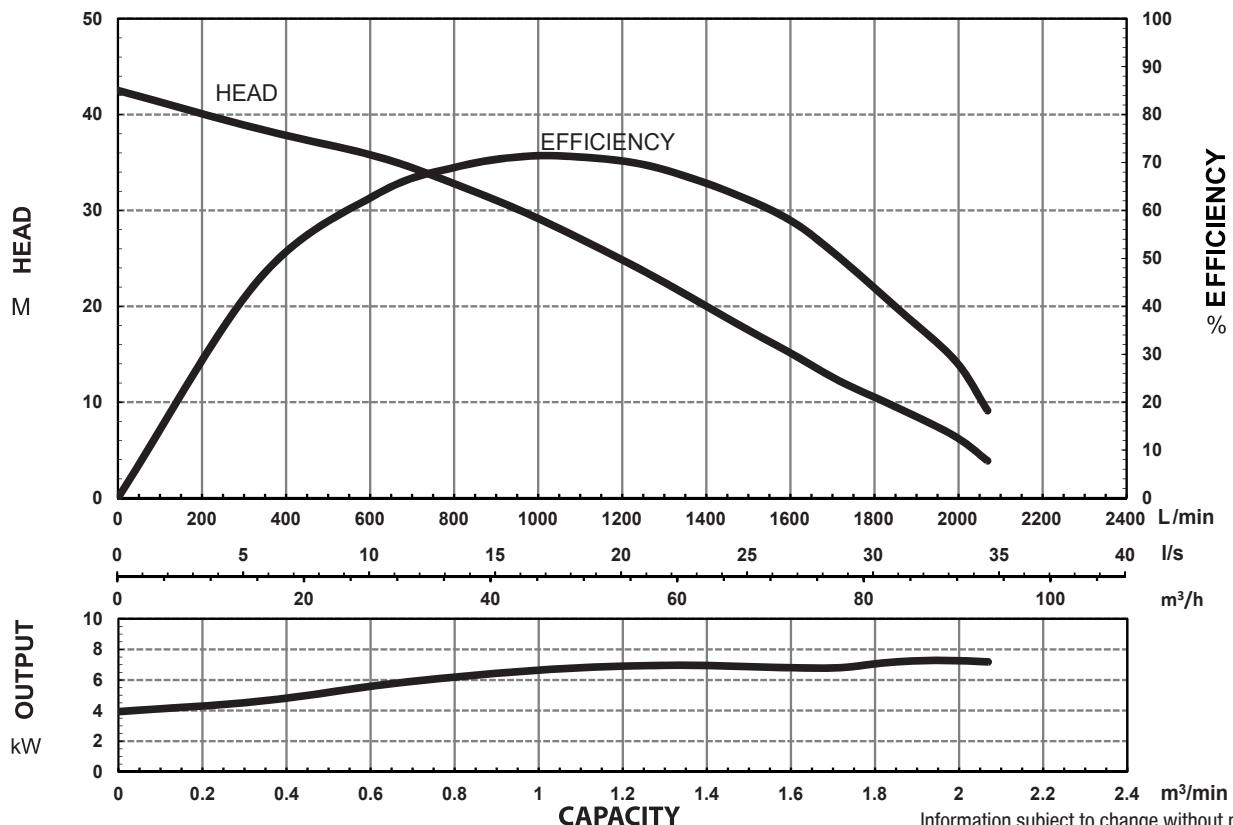
### SPECIFICATIONS

|                            |   |
|----------------------------|---|
| Power                      | 7.5KW / 10HP                                    |
| Frequency                  | 50Hz  |
| Discharge                  | 100mm / 4 inch female BSP                       |
| Weight (Excl cable)        | 83Kg  |
| Solid Passage              | 20 mm   |
| Phase                      | 3ø  |
| Voltage                    | 415   |
| Full Load Amps             | 14.4  |
| Maximum Liquid Temperature | 0-40° C   |
| Maximum Submersion Depth   | 30m (100 feet)                                  |
| Motor type                 | Dry motor                                       |
| Motor Speed                | 2 Pole (2800 rpm)                               |
| Motor Insulation           | Class F   |
| Motor Protection           | IP68  |
| Protector                  | Auto cut  |
| Motor Bearings             | Ball Type                                       |
|                            | Dual Mechanical seal                            |
| Seal Method                | Upper: Carbon/Ceramic<br>Lower: Silicon/Silicon |
| Impeller Type              | Semi-open                                       |
| Motor Cover Construction   | SCS14 Stainless Steel                           |
| Motor Casing Construction  | 316 Stainless Steel                             |
| Motor Shaft Construction   | 316 Stainless Steel                             |
| Pump Casing Construction   | SCS14 Stainless Steel                           |
| Impeller Construction      | SCS14 Stainless Steel                           |
| Strainer Construction      | 304 Stainless Steel                             |
| Cable Material             | H07RN-F   |

### MODEL NUMBER STRUCTURE

|             |   |
|-------------|---|
| <b>U</b>    | Ultraflow   |
| <b>M</b>    | 'M' indicates Manual, without floatswitch<br>'A' indicates Automatic, without floatswitch |
| <b>D</b>    | 'D' indicates 'Drainage' series   |
| <b>N</b>    | 'N' indicates series  |
| <b>SS</b>   | 'SS' indicates Stainless Steel wetted parts   |
| <b>7500</b> | Power consumption in 'Watts'  |
| <b>100</b>  | Outlet size   |
| <b>3</b>    | '3' indicates 415 volt three phase  |

### PERFORMANCE CURVES

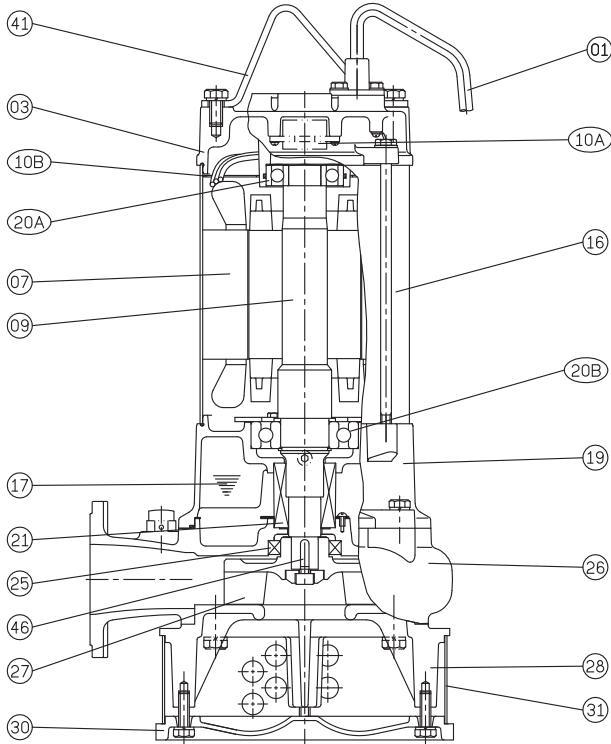


Information subject to change without notice.

Models: UMDNSS7500/100/3



**SECTIONAL DRAWING & MATERIALS LIST**



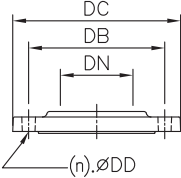
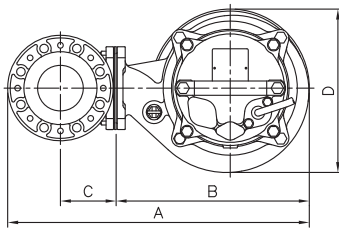
| PART NUMBER | DESCRIPTION                          | MATERIAL  |
|-------------|--------------------------------------|---|
| 01          | Cable                                | H07RN-F   |
| 03          | Upper Motor Cap/<br>Bearing Housing  | SCS14 Stainless Steel                           |
| 07          | Motor Stator                         |   |
| 09          | Shaft (With Rotor)                   | (Shaft) Stainless Steel 316                     |
| 10 A        | Auto Cut Out Overload                |   |
| 10B         | Auto Cut Out Overload Mounting Plate |   |
| 16          | Motor Casing                         | 316 Stainless Steel                             |
| 17          | Lubricant                            | Turbine Oil                                     |
| 19          | Lower Bearing Housing                | SCS14 Stainless Steel                           |
| 20A & 20B   | Upper Bearing & Lower Bearing        |   |
| 21          | Mechanical Seal                      | Upper: Carbon/Ceramic<br>Lower: Silicon/Silicon |
| 25          | Oil Seal                             | Nitrile   |
| 26          | Pump Casing                          | SCS14 Stainless Steel                           |
| 27          | Impeller                             | SCS14 Stainless Steel                           |
| 28          | Suction Cover                        | SCS14 Stainless Steel                           |
| 30          | Pump Base Plate                      | SCS14 Stainless Steel                           |
| 31          | Strainer                             | 316 Stainless Steel                             |
| 41          | Handle                               | 304 Stainless Steel                             |
| 46          | Impeller Key                         | 304 Stainless Steel                             |
| 47          | O'rings                              |   |
| 55          | Oil Plug                             | 304 Stainless Steel                             |

When ordering spare parts as above, simply add the pump model number to the part number from the list above. For example, a power lead (part '01'), the complete spare part name would be written as '01-UMDNSS7500/100/3'.

**DIMENSIONAL DRAWING**

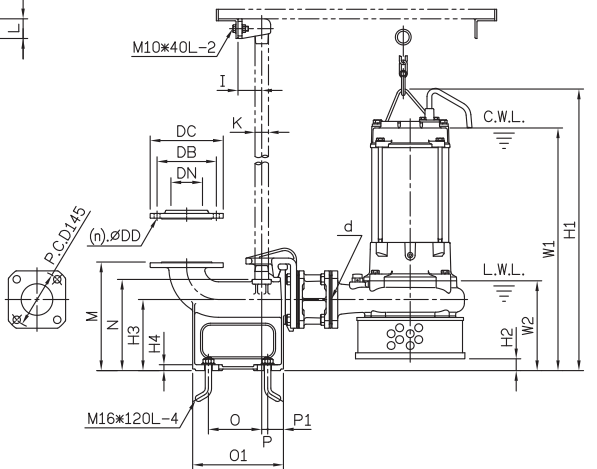
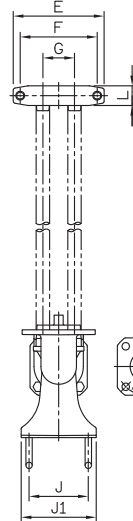
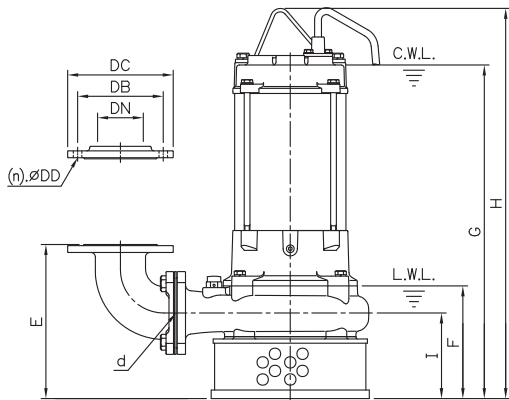
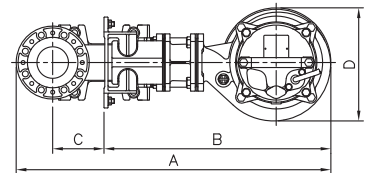
**ELBOW (FLANGE) SET**

**GUIDE RAIL SYSTEM DIMENSIONS  
USING GRSS10080 HP GUIDE RAIL KIT**



**DIMENSIONS - mm**

| DN  | DB  | DC  | DD |
|-----|-----|-----|----|
| 100 | 175 | 210 | 15 |



**DIMENSIONS - mm  
UMDNSS7500/100/3**

| d  | A   | B   | C   | D   | E   | F   | G   | H   | I   |
|----|-----|-----|-----|-----|-----|-----|-----|-----|-----|
| 80 | 556 | 338 | 113 | 286 | 276 | 198 | 585 | 684 | 151 |

**DIMENSIONS - UMDNSS7500/100/3**

| d  | A   | B   | C   | D   | E   | F   | G  | I  | J   | J1  | K  | L  | M   | N   | O   | O1  | P  | P1 | W1  | W2  | H1  | H2 | H3  | H4 |
|----|-----|-----|-----|-----|-----|-----|----|----|-----|-----|----|----|-----|-----|-----|-----|----|----|-----|-----|-----|----|-----|----|
| 80 | 829 | 574 | 130 | 286 | 230 | 195 | 80 | 60 | 170 | 210 | 32 | 50 | 285 | 231 | 155 | 250 | 15 | 40 | 615 | 228 | 714 | 30 | 180 | 15 |

Information subject to change without notice.



T 1300 662 787 | F 1300 662 717  
 22-24 Somerville Circuit, Emu Plains NSW 2750  
 E sales@generalpumps.com.au www.generalpumps.com.au