



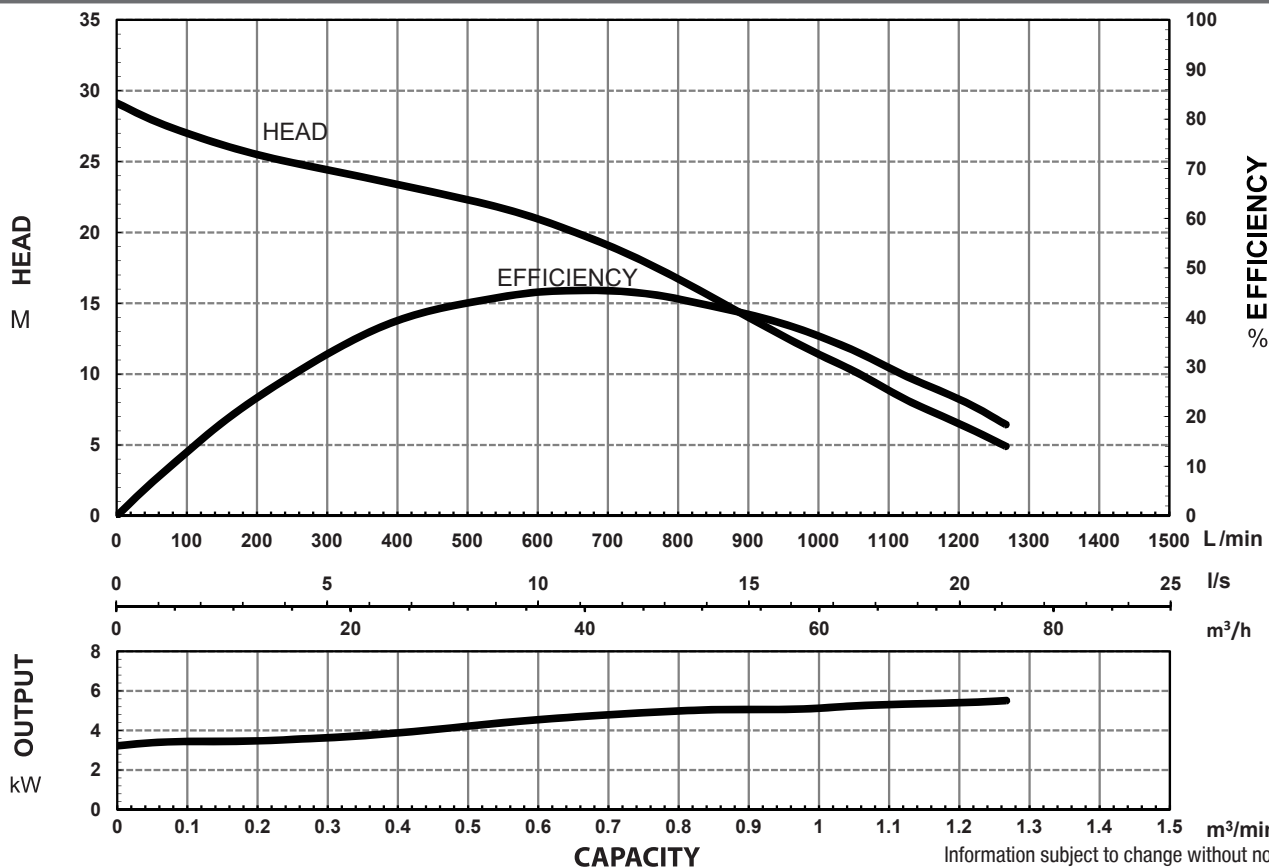
SPECIFICATIONS

| | |
|----------------------------|---|
| Power | 5.5kW / 7.5HP |
| Frequency | 50Hz |
| Discharge | 80mm / 3 inch female BSP |
| Weight (Excl cable) | 68KG |
| Solid Passage | 50 mm |
| Phase | 3ø |
| Voltage | 415 |
| Full Load Amps | 11.2 |
| Maximum Liquid Temperature | 0-40° C |
| Maximum Submersion Depth | 10m (33 feet) |
| Motor type | Dry motor |
| Motor Speed | 2 Pole (2800 rpm) |
| Motor Insulation | Class F |
| Motor Protection | IP68 |
| Protector | Auto cut |
| Motor Bearings | Ball Type |
| | Dual Mechanical seal |
| Seal Method | Upper: Carbon/Ceramic Lower: Silicon/Silicon |
| Impeller Type | Vortex |
| Motor Cover Construction | SCS14 Stainless Steel |
| Motor Casing Construction | 316 Stainless Steel |
| Motor Shaft Construction | 316 Stainless Steel |
| Pump Casing Construction | SCS14 Stainless Steel |
| Impeller Construction | SCS14 Stainless Steel |
| Cable Material | H07RN-F |

MODEL NUMBER STRUCTURE

| | |
|-------------|---|
| U | Ultraflow |
| M | 'M' indicates Manual, without floatswitch |
| V | 'V' indicates 'Vortex' series |
| N | 'N' indicates 'Cutter' series |
| SS | 'SS' indicates Stainless Steel wetted parts |
| 5500 | Power consumption in 'Watts' |
| 80 | Outlet size |
| 3 | '3' indicates 415 volt three phase |

PERFORMANCE CURVES

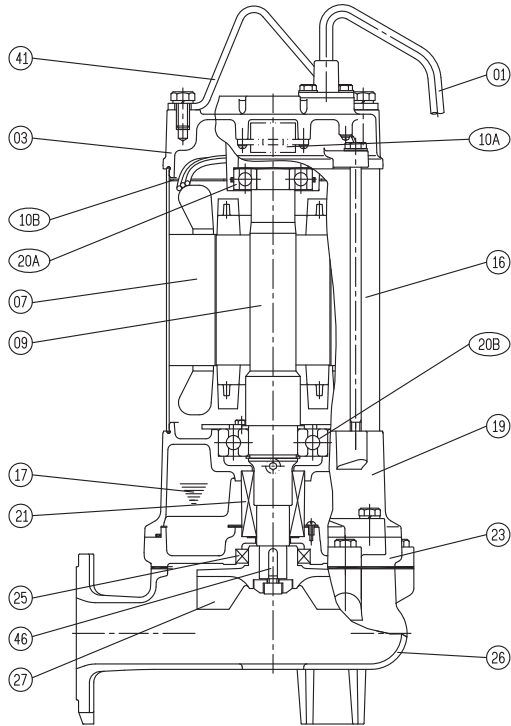


Information subject to change without notice.

Models: **UMVNSS5500/80/3**



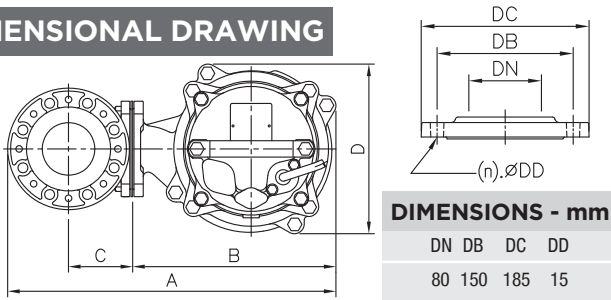
SECTIONAL DRAWING & MATERIALS LIST



| PART NUMBER | DESCRIPTION | MATERIAL |
|-------------|-------------------------------|---|
| 01 | Cable | H07RN-F |
| 03 | Upper Motor Cap | SCS14 Stainless Steel |
| 07 | Motor Stator | |
| 09 | Shaft With (With Rotor) | (Shaft) Stainless Steel 316 |
| 10A | Auto Cut Out Overload | |
| 10B | Winding Cover Plate | |
| 16 | Motor Casing | 316 Stainless Steel |
| 17 | Lubricant | Turbine Oil |
| 19 | Lower Bearing Housing | SCS14 Stainless Steel |
| 20A & 20B | Upper Bearing & Lower Bearing | |
| 21 | Mechanical Seal | Upper: Carbon/Ceramic Lower: Silicon/Silicon |
| 23 | Mechanical Seal Housing | SCS14 Stainless Steel |
| 25 | Oil Seal | Nitrile |
| 26 | Pump Casing | SCS14 Stainless Steel |
| 27 | Impeller | SCS14 Stainless Steel |
| 41 | Handle | 304 Stainless Steel |
| 46 | Impeller Key | 304 Stainless Steel |
| 47 | O'rings | |
| 55 | Oil Plug | 304 Stainless Steel |

When ordering spare parts as above, simply add the pump model number to the part number from the list above. For example, a power lead (part '01'). the complete spare part name would be written as '01-UMVNSS5500/80/3'.

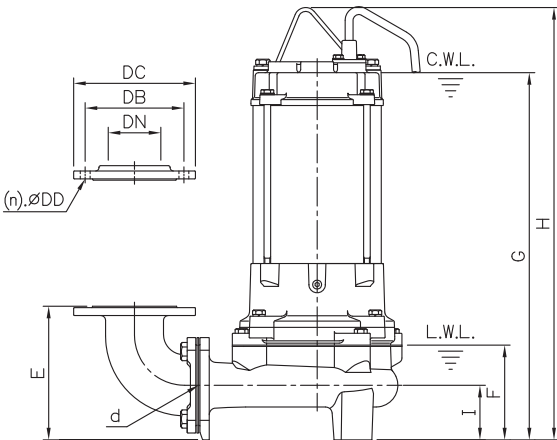
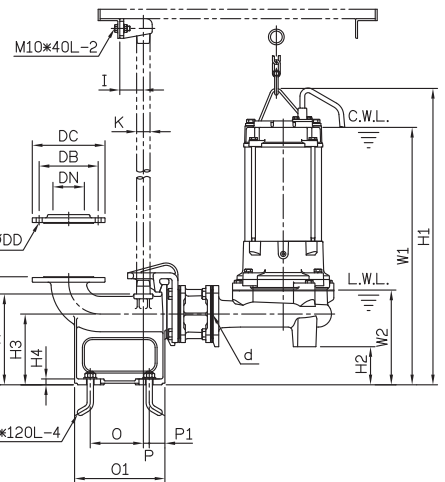
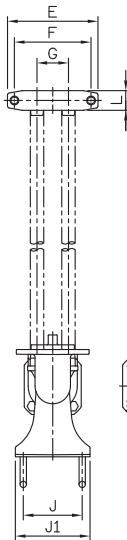
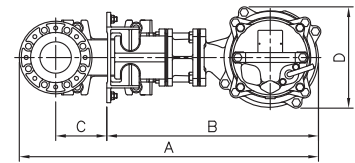
DIMENSIONAL DRAWING



DIMENSIONS - mm

| DN | DB | DC | DD |
|----|-----|-----|----|
| 80 | 150 | 185 | 15 |

GUIDE RAIL SYSTEM DIMENSIONS USING GRSS80HP GUIDE RAIL KIT



DIMENSIONS - mm
UMVNSS5500/80/3

| d | A | B | C | D | E | F | G | H | I |
|----|-----|-----|----|-----|-----|-----|-----|-----|----|
| 80 | 499 | 309 | 98 | 258 | 203 | 144 | 558 | 657 | 83 |

DIMENSIONS - UMVNSS5500/80/3

| d | A | B | C | D | E | F | G | I | J | J1 | K | L | M | N | O | O1 | P | P1 | W1 | W2 | H1 | H2 | H3 | H4 |
|----|-----|-----|-----|-----|-----|-----|----|----|-----|-----|----|----|-----|-----|-----|-----|----|----|-----|-----|-----|----|-----|----|
| 80 | 768 | 545 | 130 | 258 | 230 | 195 | 80 | 60 | 150 | 190 | 32 | 50 | 275 | 231 | 135 | 230 | 15 | 40 | 655 | 241 | 754 | 97 | 180 | 15 |

Information subject to change without notice.



T 1300 662 787 | F 1300 662 717
 22-24 Somerville Circuit, Emu Plains NSW 2750
 E sales@generalpumps.com.au www.generalpumps.com.au