



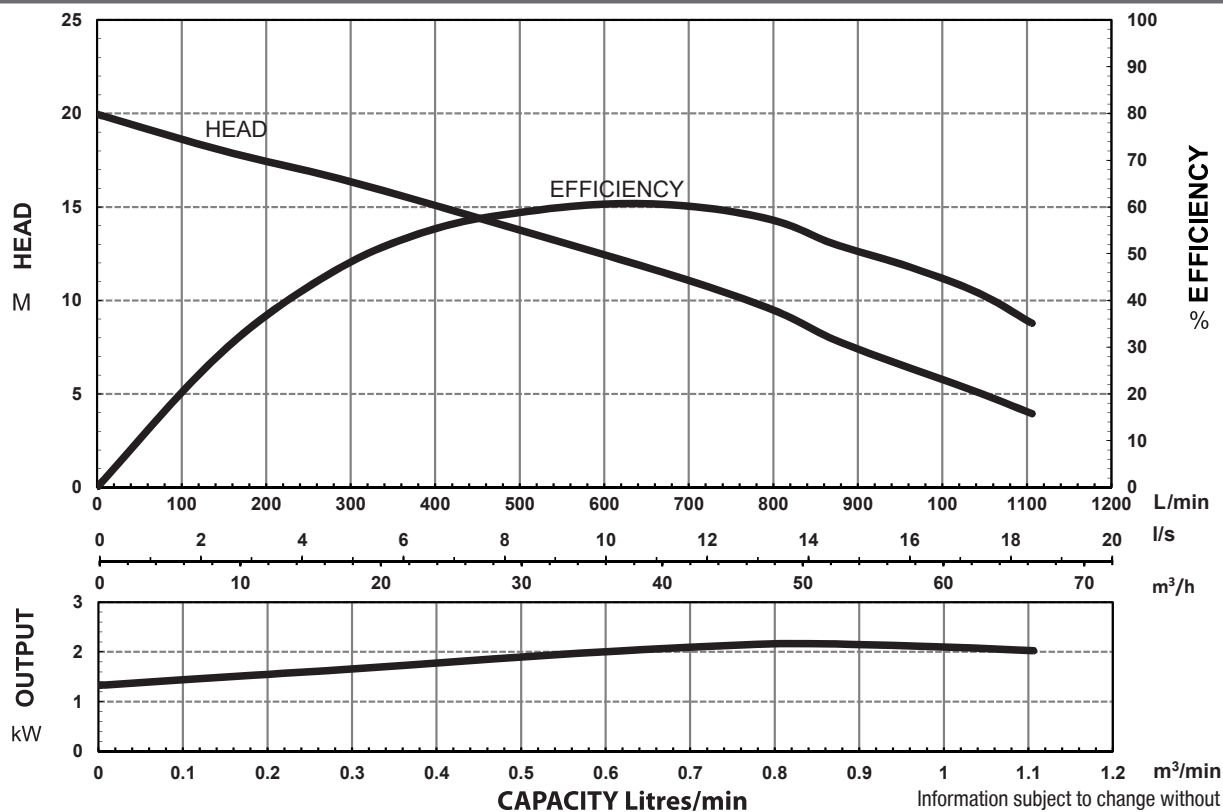
MODEL NUMBER STRUCTURE

U	Ultraflow
M	'M' indicates Manual, without floats switch 'A' indicates Automatic, without floats switch
C	'C' indicates 'Cutter' series
Z	'Z' indicates series
2200	Power consumption in 'Watts'
80	Outlet size
3	'3' indicates 415 volt three phase

SPECIFICATIONS

Power	2.2kW / 3.0HP
Frequency	50Hz
Discharge	80mm / 3 inch female BSP
Weight (Excl cable)	39Kg – UACZ2200/80/3 34Kg – UMCZ2200/80/3
Solid Passage	35 mm
Phase	3 ϕ
Voltage	415
Full Load Amps	4.8
Maximum Liquid Temperature	0-40° C
Maximum Submersion Depth	10m (33 feet)
Motor type	Dry motor
Motor Speed	2 Pole (2800 rpm)
Motor Insulation	Class B
Motor Protection	IP68
Protector	Auto cut
Motor Bearings	Ball Type
Seal Method	Dual Mechanical seal
	Upper: Carbon/Ceramic Lower; Silicon/Silicon
Impeller Type	Semi Open
Motor Cover Construction	FC-200 Cast Iron
Motor Casing Construction	304 Stainless Steel
Motor Shaft Construction	403 Stainless Steel
Pump Casing Construction	FC-200 Cast Iron
Impeller Construction	FC-200 Cast Iron
Cutting Tip	Tungsten
Cable Material	H07RN-F

PERFORMANCE CURVES

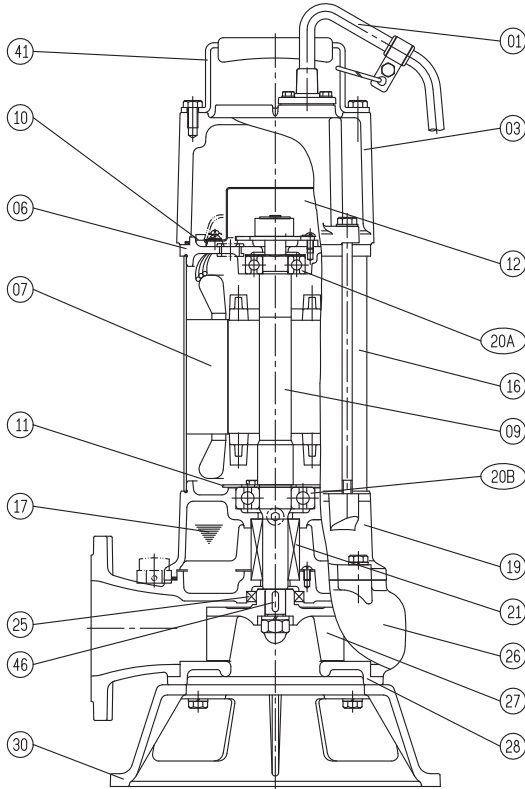


Information subject to change without notice.

Models: **UMCZ2200/80/3**
UACZ2200/80/3



SECTIONAL DRAWING & MATERIALS LIST



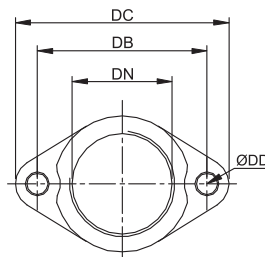
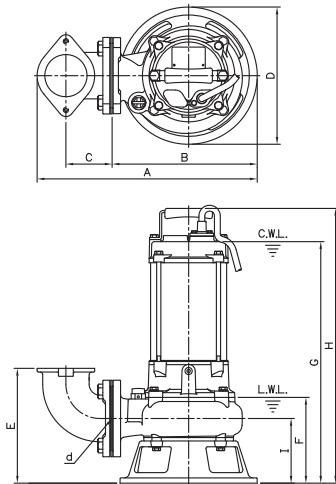
PART NUMBER	DESCRIPTION	MATERIAL
01	Cable	H07RN-F
03	Upper Motor Cap (Part 3 & 6 are one part on UMCZ2200/80/3)	Cast Iron FC-200
06	Upper Bearing Housing	Cast Iron FC-200
07	Motor Stator	
09	Shaft With (With Rotor)	(Shaft) Stainless Steel 403
10	Auto Cut Out Overload	
11	Bearing Fixing Plate	
12	Centrifugal Switch	
16	Motor Casing	304 Stainless Steel
17	Lubricant	Turbine Oil
19	Lower Bearing Housing	Cast Iron FC-200
20A & 20B	Upper Bearing & Lower Bearing	
21	Mechanical Seal	Upper: Carbon/Ceramic Lower: Silicon/Silicon
25	Oil Seal	Nitrile
26	Pump Casing	Cast Iron FC-200
27	Impeller	Cast Iron FC-200
28	Suction Cover Stand	Cast Iron FC-200
30	Pump Base Plate	Cast Iron FC-200
41	Handle	304 Stainless Steel
46	Impeller Key	304 Stainless Steel
47	O'rings	
55	Oil Plug	304 Stainless Steel
FL	Floatswitch	

When ordering spare parts as above, simply add the pump model number to the part number from the list above. For example, a power lead (part '01'), the complete spare part name would be written as '01-UACZ2200/80/1'.

DIMENSIONAL DRAWING

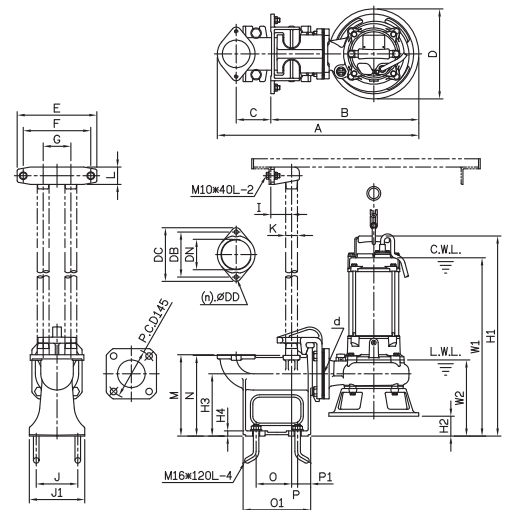
ELBOW (FLANGE) SET

GUIDE RAIL SYSTEM DIMENSIONS USING GR80B GUIDE RAIL KIT



DIMENSIONS - mm

DN	DB	DC	DD
80	130	155	12



DIMENSIONS UACZ2200/80/3

d	A	B	C	D	E	F	G	H	I
80	417	275	88	260	218	163	539	602	123

UMCZ2200/80/3

d	A	B	C	D	E	F	G	H	I
80	417	275	88	260	218	163	458	521	123

DIMENSIONS - UACZ2200/80/3

d	A	B	C	D	E	F	G	I	J	J1	K	L	M	O	O1	P	P1	W1	W2	H1	H2	H3	H4
80	583	428	100	260	230	195	80	60	120	160	32	50	235	103	195	18	38	596	220	659	58	180	15

DIMENSIONS - UMCZ2200/80/3

d	A	B	C	D	E	F	G	I	J	J1	K	L	M	O	O1	P	P1	W1	W2	H1	H2	H3	H4
80	583	428	100	260	230	195	80	60	120	160	32	50	235	103	195	18	38	515	220	578	58	180	15

Information subject to change without notice.



T 1300 662 787 | F 1300 662 717
22-24 Somerville Circuit, Emu Plains NSW 2750
E sales@generalpumps.com.au www.generalpumps.com.au