



Models: **UMCN750/50/1**
UACN750/50/1
UMCN750/50/3
UACN750/50/3
UACN750/50/1-FSLC



SPECIFICATIONS

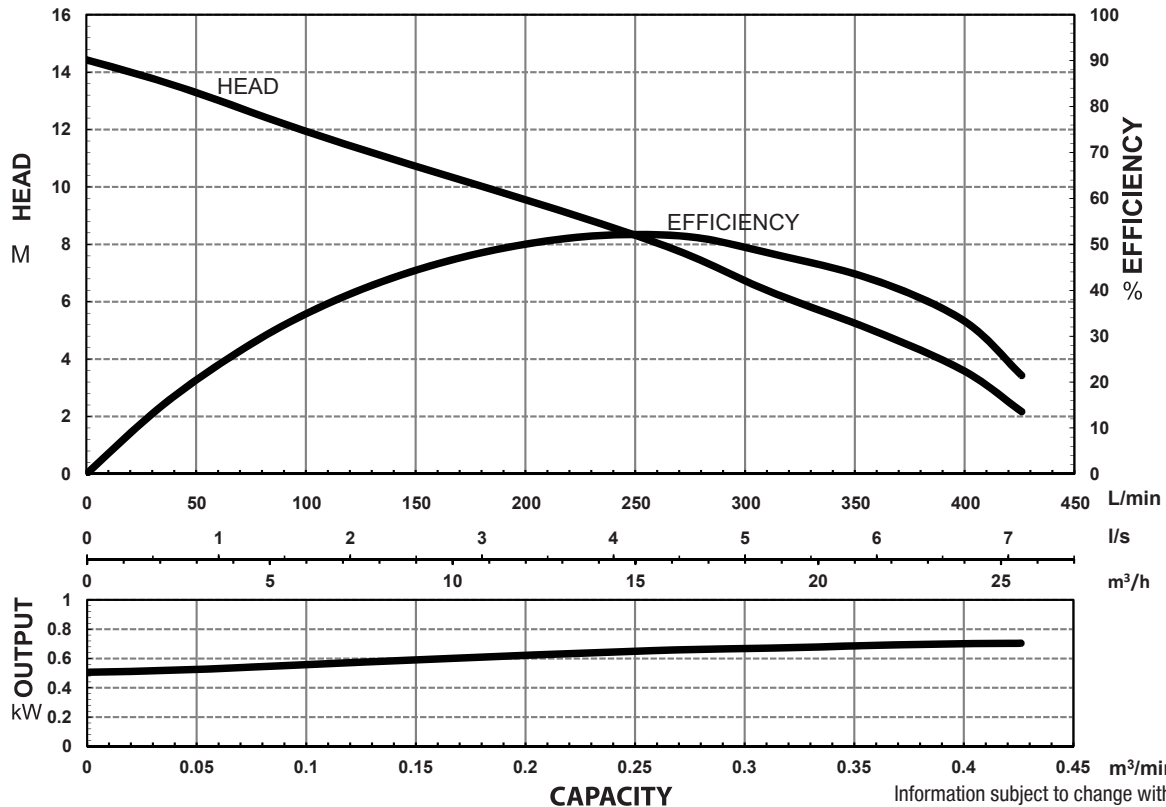
Power	0.75kW / 1.0HP	
Frequency	50Hz	
Discharge	50mm / 2 inch female BSP	
Weight (Excl cable)	18Kg - Single Phase Models 17Kg - Three Phase Models	
Solid Passage	26 mm	
Phase	1Ø	3Ø
Voltage	240	415
Full Load Amps	5.0	1.8
Maximum Liquid Temperature	0-40° C	
Maximum Submersion Depth	30m (100 feet)	
Motor type	Dry motor	
Motor Speed	2 Pole (2800 rpm)	
Motor Insulation	Class B	
Motor Protection	IP68	
Protector	Auto cut	
Motor Bearings	Ball Type	
Seal Method	Dual Mechanical seal	
	Upper: Carbon/Ceramic Lower; Silicon/Silicon	
Impeller Type	Semi Open	
Motor Cover Construction	FC-200 Cast Iron	
Motor Casing Construction	304 Stainless Steel	
Motor Shaft Construction	410 Stainless Steel	
Pump Casing Construction	FC-200 Cast Iron	
Impeller Construction	FC-200 Cast Iron with tungsten cutting tip	
Cable Material	H07RN-F	

MODEL NUMBER STRUCTURE

U	Ultraflow
M	'M' indicates Manual, without floatswitch 'A' indicates Automatic, without floatswitch
C	'C' indicates 'Cutter' series
N	'N' indicates new series
750	Power consumption in 'Watts'
50	Outlet size
1	'1' indicates 240 volt single phase '3' indicates 415 volt three phase

FSLC indicates pump is fitted with a fixed stainless steel arm bracket for floatswitch models which are used in applications to prevent the floatswitch from interfering with the sides of small pump wells

PERFORMANCE CURVES

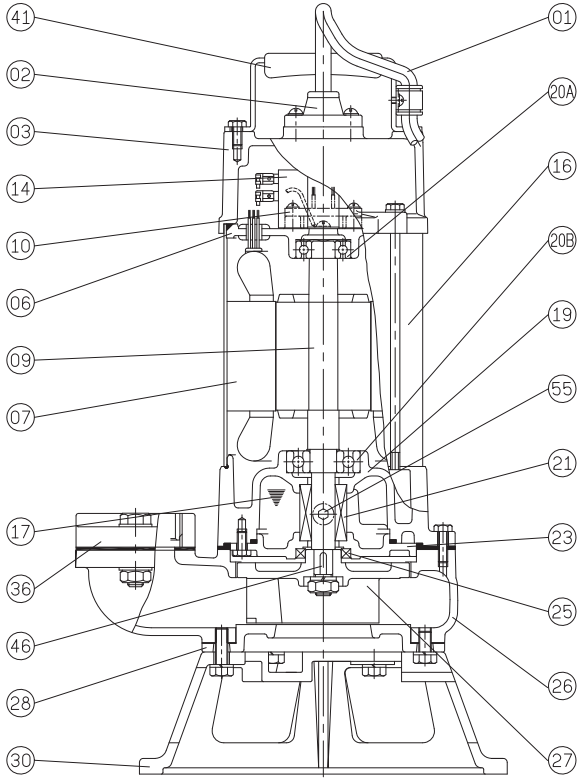


Information subject to change without notice.



T 1300 662 787 | F 1300 662 717
 22-24 Somerville Circuit, Emu Plains NSW 2750
 E sales@generalpumps.com.au www.generalpumps.com.au

SECTIONAL DRAWING & MATERIALS LIST



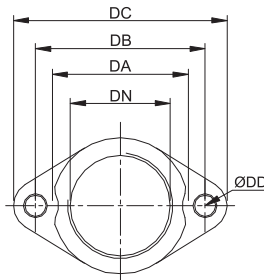
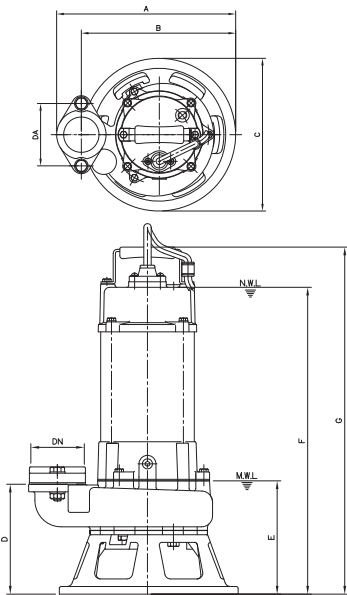
PART NUMBER	DESCRIPTION	MATERIAL
01	Cable	H07RN-F
02	Cable Gland/Base	
03	Upper Motor Cap	Cast Iron FC-200
06	Upper Bearing Housing	Cast Iron FC-200
07	Motor Stator	
09	Shaft With (With Rotor)	(Shaft) Stainless Steel 410
10	Auto Cut Out Overload	
14	Capacitor (240 volt models)	
	Transformer relay for UACN750/50/3)	
16	Motor Casing	304 Stainless Steel
17	Lubricant	Turbine Oil
19	Lower Bearing Housing	Cast Iron FC-200
20A & 20B	Upper Bearing & Lower Bearing	
21	Mechanical Seal	Upper: Carbon/Ceramic Lower: Silicon/Silicon
23	Mechanical Seal Housing	Cast Iron FC-200
25	Oil Seal	Nitrile
26	Pump Casing	Cast Iron FC-200
27	Impeller	Cast Iron FC-200
28	Casing Cover	Cast Iron FC-200
30	Base Foot	Cast Iron FC-200
36	Outlet Flange	Cast Iron FC-200
41	Handle	304 Stainless Steel
46	Impeller Key	304 Stainless Steel
47	O'rings	
55	Oil Plug	304 Stainless Steel
FL	Floatswitch	

To ordering spare parts as above, it will be necessary to add the model number of the code listed above. For example, a power lead for a UACN750/50/1 would be written as '01- UACN750/50/1'.

DIMENSIONAL DRAWING

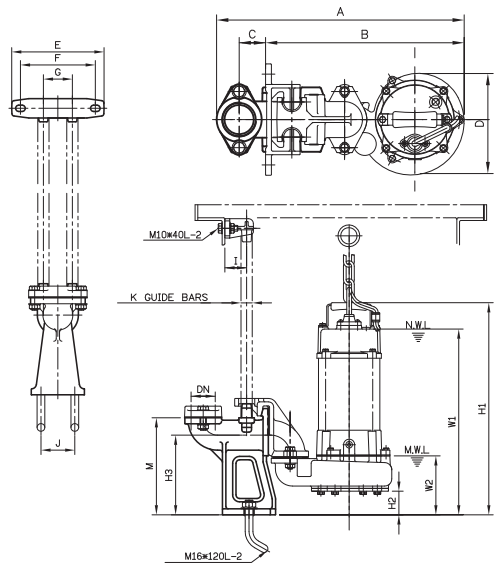
ELBOW (FLANGE) SET

GUIDE RAIL SYSTEM DIMENSIONS USING GR50B GUIDE RAIL KIT



DIMENSIONS - mm

DN	DA	DB	DC	DD
50	77	96	121	12



DIMENSIONS

DA	A	B	C	D	E	F	G	I	J	K	M	W1	W2	H1	H2	H3
50	425	341	45	173	190	155	60	50	60	19	201	381	110	435	53	165

DIMENSIONS								
DN	DA	A	B	C	D	E	F	G
50	96	276	238	235	143	145	406	460

PUMP BASE FOOT TO BE DETACHED FOR GUIDE RAIL APPLICATIONS

Information subject to change without notice.