



Models: **UMDNHF2200/80/3**
UADNHF2200/80/3



UMDNHF2200/80/3

UADNHF2200/80/3

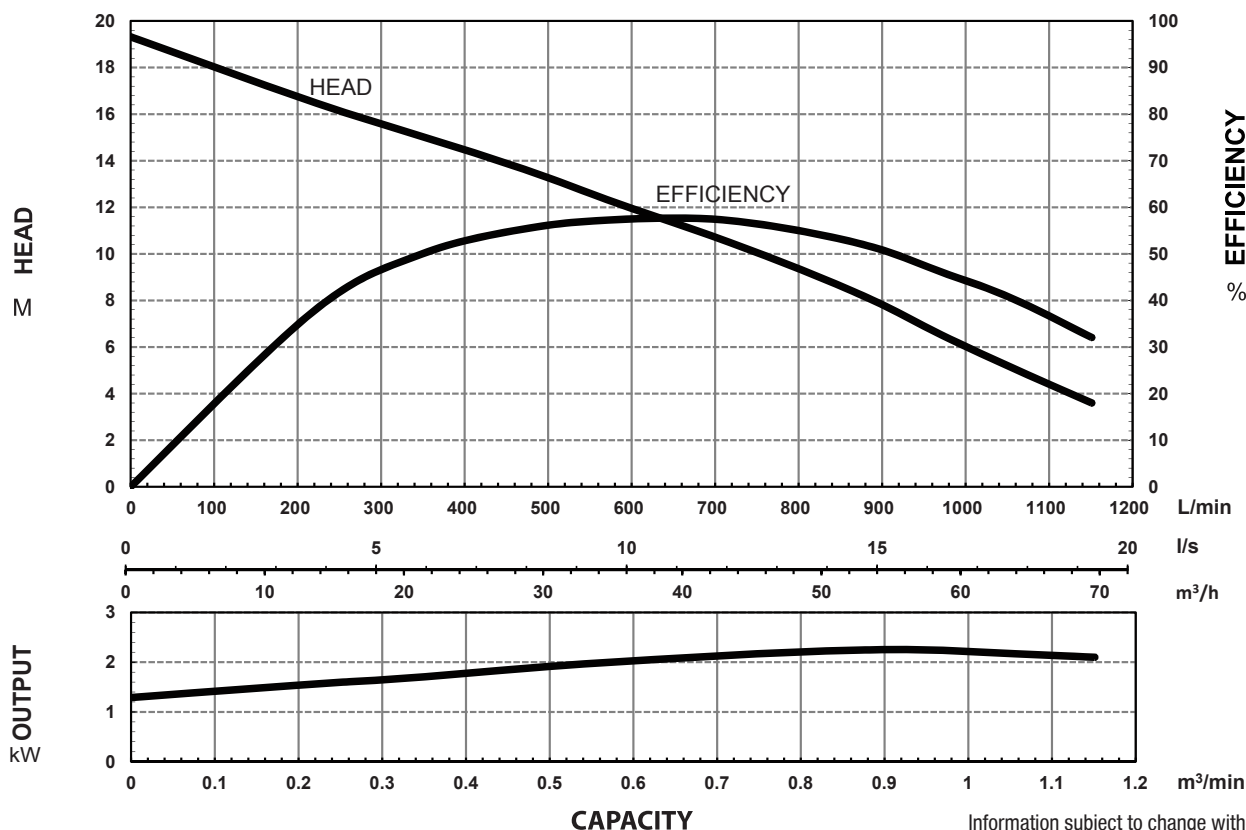
MODEL NUMBER STRUCTURE

U	Ultraflow
M	'M' indicates Manual, without floatswitch 'A' indicates Automatic, with floatswitch
D	'D' indicates Manual, without floatswitch
N	'N' indicates New series
HF	'HF' indicates High Flow series
2200	Power consumption in 'Watts'
80	Outlet size
3	'3' indicates 415 volt three phase

SPECIFICATIONS

Power	2.2kW / 3.0HP
Frequency	50Hz
Discharge	80mm / 3 inch female BSP
Weight (Excl cable)	44Kg - UADNHF2200/80/3 40Kg - UMDNHF2200/80/3
Solid Passage	20 mm
Phase	3ø
Voltage	415
Full Load Amps	4.8
Maximum Liquid Temperature	0-40° C
Maximum Submersion Depth	30m (100 feet)
Motor type	Dry motor
Motor Speed	2 Pole (2800 rpm)
Motor Insulation	Class B
Motor Protection	IP68
Protector	Auto cut
Motor Bearings	Ball Type
Seal Method	Dual Mechanical seal Upper: Carbon/Ceramic Lower: Silicon/Silicon
Impeller Type	Semi-open
Motor Cover Construction	FC-200 Cast Iron
Motor Casing Construction	304 Stainless Steel
Motor Shaft Construction	403 Stainless Steel
Pump Casing Construction	FC-200 Cast Iron
Impeller Construction	FC-200 Cast Iron
Strainer Construction	304 Stainless Steel
Cable Material	H07RN-F

PERFORMANCE CURVES

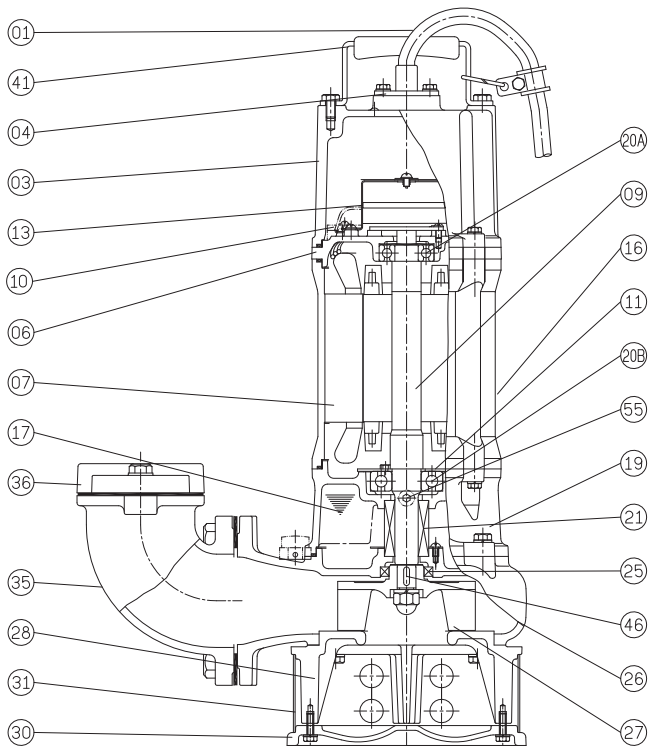


Information subject to change without notice.

Models: **UMDNHF2200/80/3**
UADNHF2200/80/3



SECTIONAL DRAWING & MATERIALS LIST



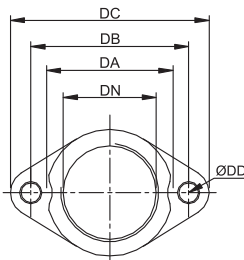
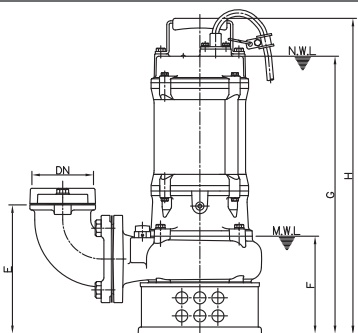
PART NUMBER	DESCRIPTION	MATERIAL	NOTES
01	Cable	H07RN-F	
04	Cable Base	304 Stainless Steel	
03	Upper Motor	Cap Cast Iron FC-200	Motor cap and bearing housing are one part on UMDNHF2200/80/3
06	Upper Bearing Housing	Cast Iron FC-200	
07	Motor Stator		
09	Shaft With (With Rotor)	403 Stainless Steel	
10	Auto Cut Out Overload		
11	Bearing fixer		
13	Transformer relay		UADNHF2200/80/3 only
16	Motor Casing	304 Stainless Steel	
17	Lubricant	Turbine Oil	
19	Lower Bearing Housing	Cast Iron FC-200	
20A	Upper Bearing		
20B	Lower Bearing		
19	Lower Bearing Housing	Cast Iron FC-200	
20A	Upper Bearing		
20B	Lower Bearing		
21	Mechanical Seal	Upper: Carbon/Ceramic Lower: Silicon/Silicon	
25	Oil Seal	Nitrile	
26	Pump Casing	Cast Iron FC-200	
27	Impeller	Cast Iron FC-200	
28	Casing Cover	Cast Iron FC-200	
30	Strainer foot	Cast Iron FC-200	
31	Strainer	304 Stainless Steel	
35	Outlet Elbow	Cast Iron FC-200	
36	Outlet Flange	Cast Iron FC-200	
41	Handle	304 Stainless Steel	
46	Impeller Key	304 Stainless Steel	
47	O'rings		
55	Oil Plug	304 Stainless Steel	
FL	Floatswitch		

When ordering spare parts as above, simply add the pump model number to the part number from the list above. For example, a power lead (part '01'), the complete spare part name would be written as '01-UADNHF2200/80/3'.

DIMENSIONAL DRAWING

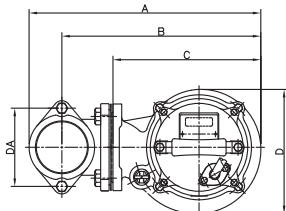
ELBOW (FLANGE) SET EB3-130DRAWING

GUIDE RAIL SYSTEM DIMENSIONS USING GR80B GUIDE RAIL KIT



DIMENSIONS - mm

DN	DA	DB	DC	DD
80	109	130	155	12



DIMENSIONS - mm

UADNHF2200/80/3

DN	DA	A	B	C	D	E	F	G	H
80	130	391	333	247	207	214	160	545	608

UMDNHF2200/80/3

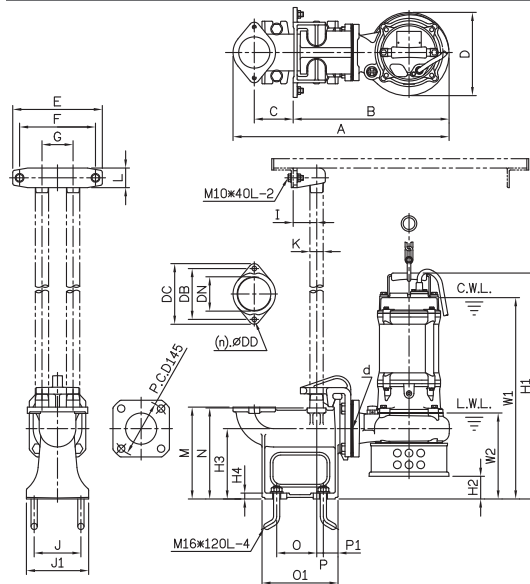
DN	DA	A	B	C	D	E	F	G	H
80	130	391	333	247	207	214	160	461	524

UADNHF2200/80/3 - DIMENSIONS - mm

d	A	B	C	D	E	F	G	I	J	J1	K	L	M	N	O	O1	P	P1	W1	W2	H1	H2	H3	H4
80	556	401	100	214	230	195	80	60	120	160	32	50	235	233	103	195	18	38	624	218	687	58	180	15

UMDNHF2200/3 - DIMENSIONS - mm

d	A	B	C	D	E	F	G	I	J	J1	K	L	M	N	O	O1	P	P1	W1	W2	H1	H2	H3	H4
80	556	401	100	214	230	195	80	60	120	160	32	50	235	233	103	195	18	38	515	218	578	58	180	15



Information subject to change without notice.



T 1300 662 787 | F 1300 662 717
22-24 Somerville Circuit, Emu Plains NSW 2750
E sales@generalpumps.com.au www.generalpumps.com.au