



Models: **UMDNHF1500/80/1**
UADNHF1500/80/1
UMDNHF1500/80/3
UADNHF1500/80/3



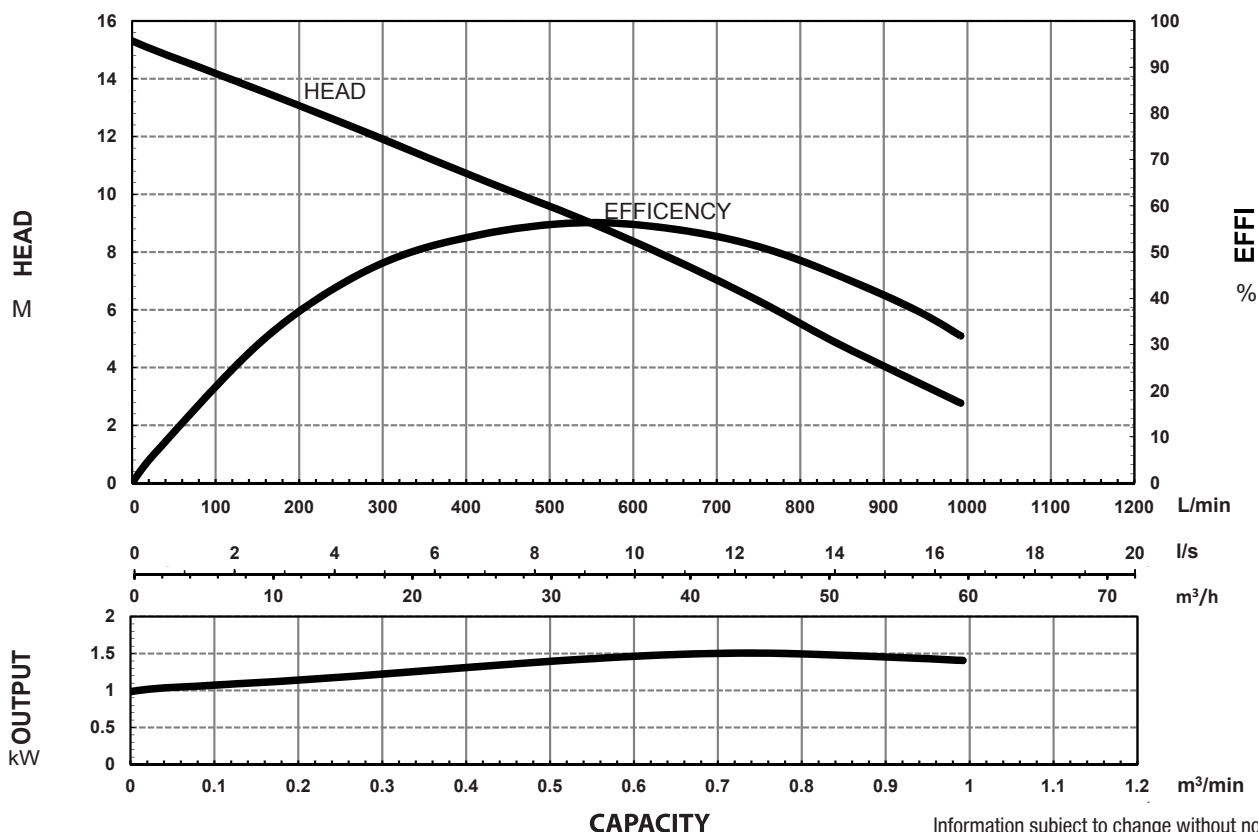
SPECIFICATIONS

Power	1.5kW / 2.0HP	
Frequency	50Hz	
Discharge	80mm / 3 inch female BSP	
Weight (Excl cable)	33Kg	
Solid Passage	20 mm	
Phase	1 ϕ	3 ϕ
Voltage	240	415
Full Load Amps	9.8	3.4
Maximum Liquid Temperature	0-40° C	
Maximum Submersion Depth	30m (100 feet)	
Motor type	Dry motor	
Motor Speed	2 Pole (2800 rpm)	
Motor Insulation	Class B	
Motor Protection	IP68	
Protector	Auto cut	
Motor Bearings	Ball Type	
Seal Method	Dual Mechanical seal	
	Upper: Carbon/Ceramic Lower: Silicon/Silicon	
Impeller Type	Semi-open	
Motor Cover Construction	FC-200 Cast Iron	
Motor Casing Construction	304 Stainless Steel	
Motor Shaft Construction	403 Stainless Steel	
Pump Casing Construction	FC-200 Cast Iron	
Impeller Construction	FC-200 Cast Iron	
Strainer Construction	304 Stainless Steel	
Cable Material	H07RN-F	

MODEL NUMBER STRUCTURE

U	Ultraflow
M	'M' indicates Manual, without floatswitch 'A' indicates Automatic, with floatswitch
D	'D' indicates 'Drainage' series
N	'N' indicates New series
HF	'HF' indicates High Flow series
1500	Power consumption in 'Watts'
80	Outlet size
1	'1' indicates 240 volt single phase '3' indicates 415 volt three phase

PERFORMANCE CURVES



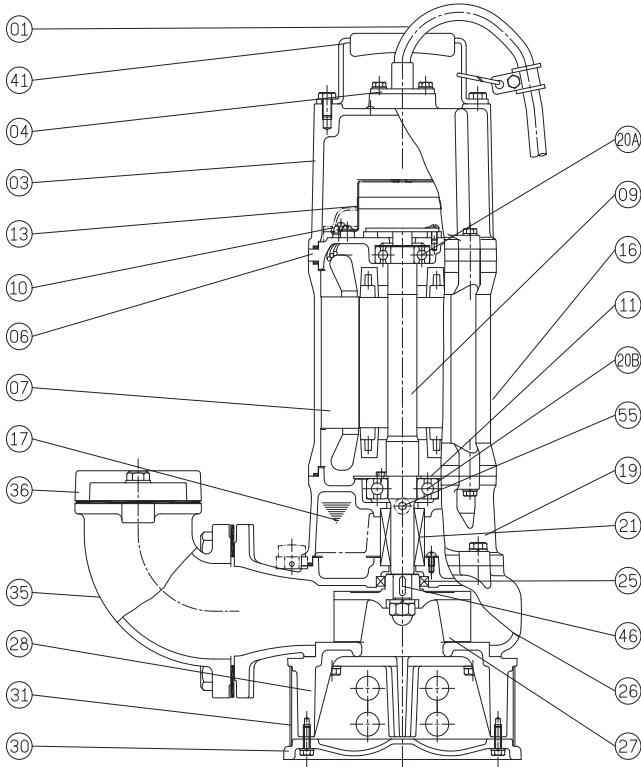
Information subject to change without notice.



T 1300 662 787 | F 1300 662 717
 22-24 Somerville Circuit, Emu Plains NSW 2750
 E sales@generalpumps.com.au www.generalpumps.com.au



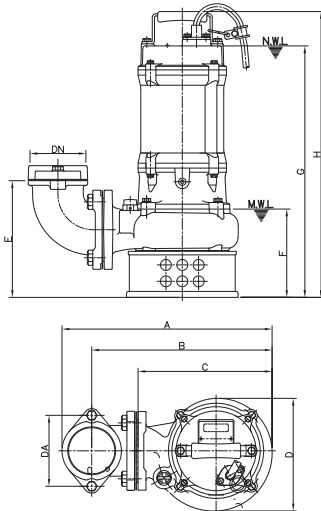
SECTIONAL DRAWING & MATERIALS LIST



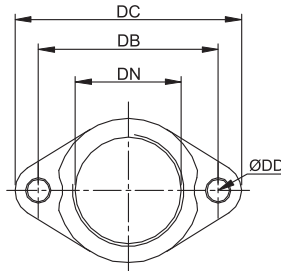
PART NUMBER	DESCRIPTION	MATERIAL	NOTES
01	Cable	H07RN-F	
04	Cable Base	304 Stainless Steel	
03	Upper Motor	Cast Iron FC-200	
06	Upper Bearing Housing	Cast Iron FC-200	Motor cap and bearing housing are one part on UMDNHF1500/80/3
07	Motor Stator		
09	Shaft With (With Rotor)	403 Stainless Steel	
10	Auto Cut Out Overload		
11	Bearing fixer		
12	Centrifugal Switch		
13	Transformer relay		Transformer relay for UADNHF1500/80/3
14A	Start Capacitor		N/A on 3 phase models
14B	Run Capacitor		N/A on 3 phase models
16	Motor Casing	304 Stainless Steel	
17	Lubricant	Turbine Oil	
19	Lower Bearing Housing	Cast Iron FC-200	
20A	Upper Bearing		
20B	Lower Bearing		
21	Mechanical Seal	Upper: Carbon/Ceramic Lower: Silicon/Silicon	
25	Oil Seal	Nitrile	
26	Pump Casing	Cast Iron FC-200	
27	Impeller	Cast Iron FC-200	
28	Casing Cover	Cast Iron FC-200	
30	Strainer foot	Cast Iron FC-200	
31	Strainer	304 Stainless Steel	
35	Outlet Elbow	Cast Iron FC-200	
36	Outlet Flange	Cast Iron FC-200	
41	Handle	304 Stainless Steel	
46	Impeller Key	304 Stainless Steel	
47	O' rings		
55	Oil Plug	304 Stainless Steel	
FL	Floatswitch		

When ordering spare parts as above, simply add the pump model number to the part number from the list above. For example, a power lead (part '01'), the complete spare part name would be written as 'UADNHF1500/80/3'.

DIMENSIONAL DRAWING



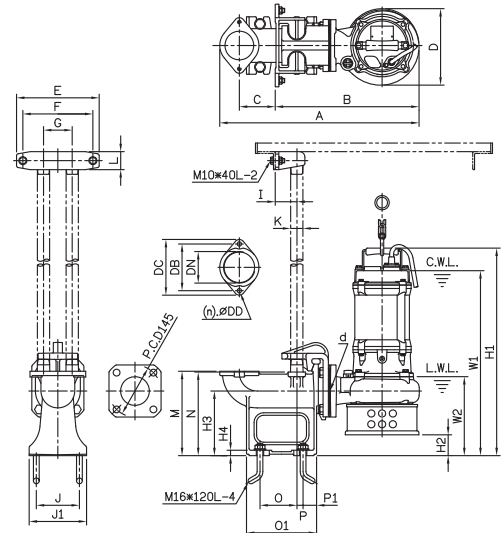
ELBOW (FLANGE) SET



DIMENSIONS - mm

DN	DA	DB	DC	DD
80	109	130	155	12

GUIDE RAIL SYSTEM DIMENSIONS USING GR80B GUIDE RAIL KIT



DIMENSIONS - UMDNHF1500/80/1, UADNHF1500/80/1 & UADNHF1500/80/3

DN	DA	A	B	C	D	E	F	G	H
80	130	391	333	247	207	214	160	512	575

DIMENSIONS - UMDNHF1500/80/3

DN	DA	A	B	C	D	E	F	G	H
80	130	391	333	247	207	214	160	461	524

DIMENSIONS - UMDNHF1500/80/1, UADNHF1500/80/1 & UADNHF1500/80/3

d	A	B	C	D	E	F	G	I	J	J1	K	L	M	N	O	O1	P	P1	W1	W2	H1	H2	H3	H4
80	556	401	100	214	230	195	80	60	120	160	32	50	235	233	103	195	18	38	597	218	660	58	180	15

DIMENSIONS - UMDNHF1500/80/3

d	A	B	C	D	E	F	G	I	J	J1	K	L	M	N	O	O1	P	P1	W1	W2	H1	H2	H3	H4
80	556	401	100	214	230	195	80	60	120	160	32	50	235	233	103	195	18	38	515	218	578	58	180	15

Information subject to change without notice.



T 1300 662 787 | F 1300 662 717
 22-24 Somerville Circuit, Emu Plains NSW 2750
 E sales@generalpumps.com.au www.generalpumps.com.au